

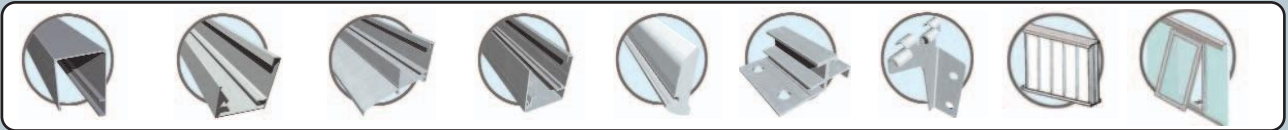
# ACCESSORIES

323



cod.4061 cod.4062 cod.4064 cod.1169/B cod.4063 cod.4066 Openable Windows

344x



cod.4045 cod.4047 cod.4046 cod.4140 cod.1169/B cod.4050 cod.4052 cod.4108 Openable Windows

684x

RE

EV

VE

626<sup>FR</sup>

RS

SO

O'

626

RE

EV

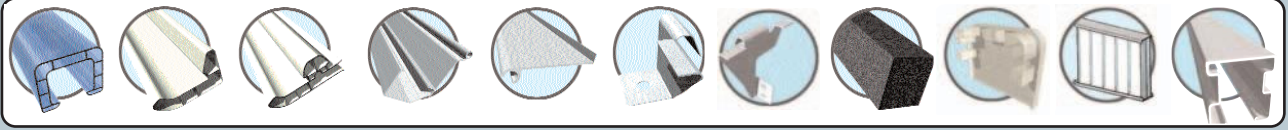
VE

Onda<sup>FR</sup>

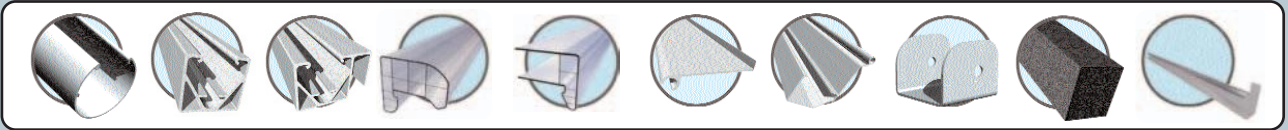
RS

SO

O'



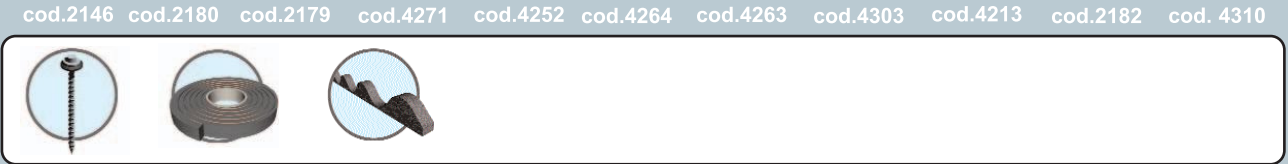
cod.2146 cod.2147 cod.2148 cod.4245 cod.4252 cod.4138 cod.4264 cod.4213 cod.4303 cod.4226 cod.4310



cod.4137-4135 cod.4243 cod.4244 cod.2179 cod.2180 cod.4252 cod.4245 cod.4142-4220 cod.4213 cod.2182



cod.2146 cod.2180 cod.2179 cod.4271 cod.4252 cod.4264 cod.4263 cod.4303 cod.4213 cod.2182 cod.4310



cod.4261 cod.4232 cod.4256

# ACCESSORIES

## PoliCarb®

Policarb® sheets can be complimented with a complete series of accessories that help the products adapt to a wide variety of uses.



WASHER WITH GASKET

Thickness (in)	Length (in)	PROFILES "H" U.V. protected	Thickness (in)	Length (in)	PROFILES "U"	Thickness (in)	PROFILES "R" U.V. protect	Thickness (in)	Length (in)
4 - 6	288		4 - 6	288		4 - 6		8 - 10/16	288
cod. 1162/6000			cod. 1158/2100			cod. 4077		cod. 2191/6000- 2192/6000	
8 - 10	288		8 - 10	288		8 - 10			
cod. 1164/6000			cod. 1160/2100			cod. 4076		PROFILES "F" U.V.protected	Thickness (in) Length (in)
16	288		16 ;20	288		16; 20		8 - 10/16	288
cod. 1165/6000			cod. 1161/2100 - 2184/2100			cod. 4087		cod. 2193/6000- 2194/6000	

# USER GUIDE INFORMATION



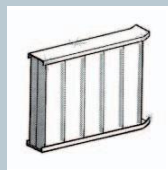
Remove adhesive film protection after installation.



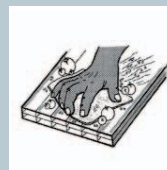
Do not store stacked sheets in direct sunlight or rain.



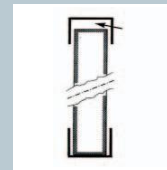
Use suitable silicone.



Apply aluminium adhesive tape.



Clean with water and neutral soap only.



Anticipate thermal expansion.