

# SPECIFICATIONS

## Propeller Unit Model PDP General Performance Data

	Model PDP Sizes						
	150	175	200	250	300	350	400
BTU/Hr Input <sup>1</sup>	150,000	175,000	200,000	250,000	300,000	350,000	400,000
BTU/Hr Output <sup>1</sup>	120,000	140,000	160,000	200,000	240,000	280,000	320,000
Max. Mounting Height (Ft.) <sup>2</sup>	16	17	15	19	21	20	19
Heat Throw (Ft.) @ Max Mtg Ht <sup>2</sup>	55	59	51	67	74	70	69

## Propeller Unit Model PTP General Performance Data

	Model PTP Sizes						
	150	175	200	250	300	350	400
BTU/Hr Input <sup>1</sup>	150,000	175,000	200,000	250,000	300,000	350,000	400,000
BTU/Hr Output <sup>1</sup>	120,000	140,000	160,000	200,000	240,000	280,000	320,000
Max. Mounting Height (Ft.) <sup>2</sup>	15	14	15	18	19	18	21
Heat Throw (Ft.) (@ Max Mtg Ht) <sup>2</sup>	51	50	53	62	69	65	74

## High Efficiency Model PTC (Effinity<sup>93</sup>) General Performance Data

	Model PTC Sizes									
	55	65	85	110	135	156	180	215 <sup>3</sup>	260 <sup>3</sup>	310 <sup>3</sup>
BTU/Hr Input <sup>1</sup>	55,000	65,000	85,000	110,000	135,000	156,000	180,000	215,000	260,000	310,000
BTU/Hr Output <sup>1</sup>	51,150	60,450	79,050	102,300	125,550	144,150	167,400	199,950	241,800	288,300
Condensate Production (Gal./Hr.)	0.3	0.4	0.5	0.7	1.0	1.1	1.3	1.6	1.9	2.3
Entering Airflow (CFM) @70° F <sup>2</sup>	1097	1141	1,650	1,750	2,160	2,510	3,020	3,865	4,585	5,400
Air Temp. Rise (°F)	43	49	44	54	54	53	51	48	49	49
Max. Mounting Height (Ft.) <sup>2</sup>	12	12	13	13	14	17	15	17	20	19
Heat Throw (Ft.) @Max Mtg Ht	43	43	48	46	51	59	53	60	70	67

<sup>1</sup> Ratings shown are for elevations up to 2,000 ft. For elevations above 2,000 feet, ratings should be reduced at the rate of 4% for each 1,000 feet above sea level. (In Canada see rating plate.) Reduction of ratings requires use of a high altitude kit.

<sup>2</sup> Data taken at 65°F ambient and unit fired at full-rated input. Mounting height as measured from bottom of unit, and without deflector hoods.

<sup>3</sup> Corresponding blower models available.

**COMFORTABLE GAS-FIRED  
UNIT HEATER SOLUTIONS  
FOR YOUR SPACE ...  
AND YOUR BOTTOM LINE.**

Effinity<sup>93</sup>  
with ConservCore Technology™



PTC



PTP/PTS



PDP



To learn more visit  
[www.ModineHVAC.com](http://www.ModineHVAC.com)  
or call 1.800.828.HEAT

Follow us on Twitter @ModineHVAC

Modine Manufacturing Company  
1500 DeKoven Avenue  
Racine, Wisconsin 53403-2552



# GAS-FIRED UNIT HEATER SOLUTIONS

## GOOD



### VERTICAL POWER VENTED

Modine's PDP power vented unit heaters are inexpensive to install, easy to use, and offer excellent in-service economy. Features include:

- Seven model sizes available ranging from 150,000 to 400,000 BTU/hr
- 80% thermal efficiency, maximizing seasonal efficiency through the use of a collector box and the power exhauster
- A 100% shut-off, intermittent pilot-ignition system with continuous retry, at no extra charge. This ignition system allows for units to be field-converted to propane, if desired
- A power exhauster that can be rotated 180 degrees. The unit can be vented vertically or horizontally
- A safety pressure-switch to assure safe venting conditions
- Designed to utilize the smallest-diameter vent pipe possible
- A level hanging mechanism for easy field adjustments after adding accessories that may change the unit's center of gravity
- Designed to operate against 0.5 inches of external static pressure

## BETTER



### HORIZONTAL POWER VENTED

The PTP was specifically designed with the customer in mind to provide high value at a reasonable cost. The PTP delivers 80% thermal efficiency in a robust package of design features, including:

- Seven model sizes available ranging from 150,000 to 400,000 BTU/hr
- Stainless steel heat exchanger comes STANDARD on all units, extending the life of your investment
- 10-year heat exchanger warranty is STANDARD, providing you peace of mind
- Totally enclosed, permanently-lubricated fan motor outside the cabinet is standard for trouble-free dependability
- Proven tubular heat exchanger design
- Power exhauster and controls mounted inside the cabinet for protection from moisture and dust
- Installs quickly and easily with knockouts and field gas and wiring connections inside a roomy controls section for quick and easy access
- For lower BTU requirements, the Hot Dawg® is available from 30,000 - 125,000 BTU/hr (Optional stainless steel heat exchanger)
- Tubular separated combustion units are also available (HDS and PTS models)

## BEST



### 93% HIGH EFFICIENCY

The Effinity<sup>93</sup> features the highest efficiency available in North America for commercial gas-fired unit heaters. This industry-leading 93% efficiency is a result of the coupling of our Conservicore® secondary heat exchanger technology with our robust tubular primary heat exchanger design. Features include:

- Ten model sizes available ranging from 55,000-310,000 BTU/hr all operating at 93% efficiency
- All sizes are separated combustion
- Can be vented as either two-pipe or concentric vent system with 3" and 4" PVC
- Contractor Convenience Package allows for easy connectivity and troubleshooting
- Modine's exclusive Conservicore technology withstands acidic condensate
- Effinity<sup>93</sup> box sizes are equal to corresponding 80% efficient PTP/PTS model
- Optional condensate pump
- Blowers available on models 215-310

To learn more visit  
[www.ModineHVAC.com](http://www.ModineHVAC.com)  
 or call 1.800.828.HEAT

Follow us on Twitter @ModineHVAC

# MODINE OFFERS A FULL RANGE OF COMFORT SOLUTIONS

#### Steam/Hot Water Unit Heaters

Ideal for commercial and industrial apps; low cost and easy installation



#### Electric Unit Heaters

Horizontal, vertical, and power throw available



#### Packaged Rooftop Ventilation

State-of-the-art dehumidification and ventilation solution; durable and efficient



ATHERION

#### Make-Up Air Units

For buildings that require heating and/or make-up air; wide performance capabilities



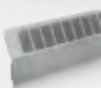
#### Infrared Heaters

Low and high intensity for spot- or area-heating



#### Applied Hydronic Heaters

Fin tube radiation, cabinet unit heaters and convectors, offered in a variety of styles



#### Ceiling Cassettes

Ductless, zone controlled cooling for better efficiency



#### Unit Ventilators

Chilled water under-the-window UV provides required fresh air



#### Geothermal HVAC Units

Water-to-water, water-to-air, and water/air combo systems



GEOFINITY

#### Residential Gas Fired/Hot Water Unit Heaters

Residential certified; ideal for small garages through large out-buildings



HOT DAWG



HOT DAWG



All Modine gas-fired unit heaters can be equipped with an optional finger-proof fan guard for operation at low mounting heights. Blowers are also available. Blower units are designed for both heating and ventilating and can be used in a variety of ways for both commercial and greenhouse markets.

Modine proudly manufactures in the USA

